



LEARNING WITH



WOODBRIDGE  
TRUST



# Ladywood School

Ladywood School is an Outstanding Special School situated in Bolton.



# Believe and Achieve



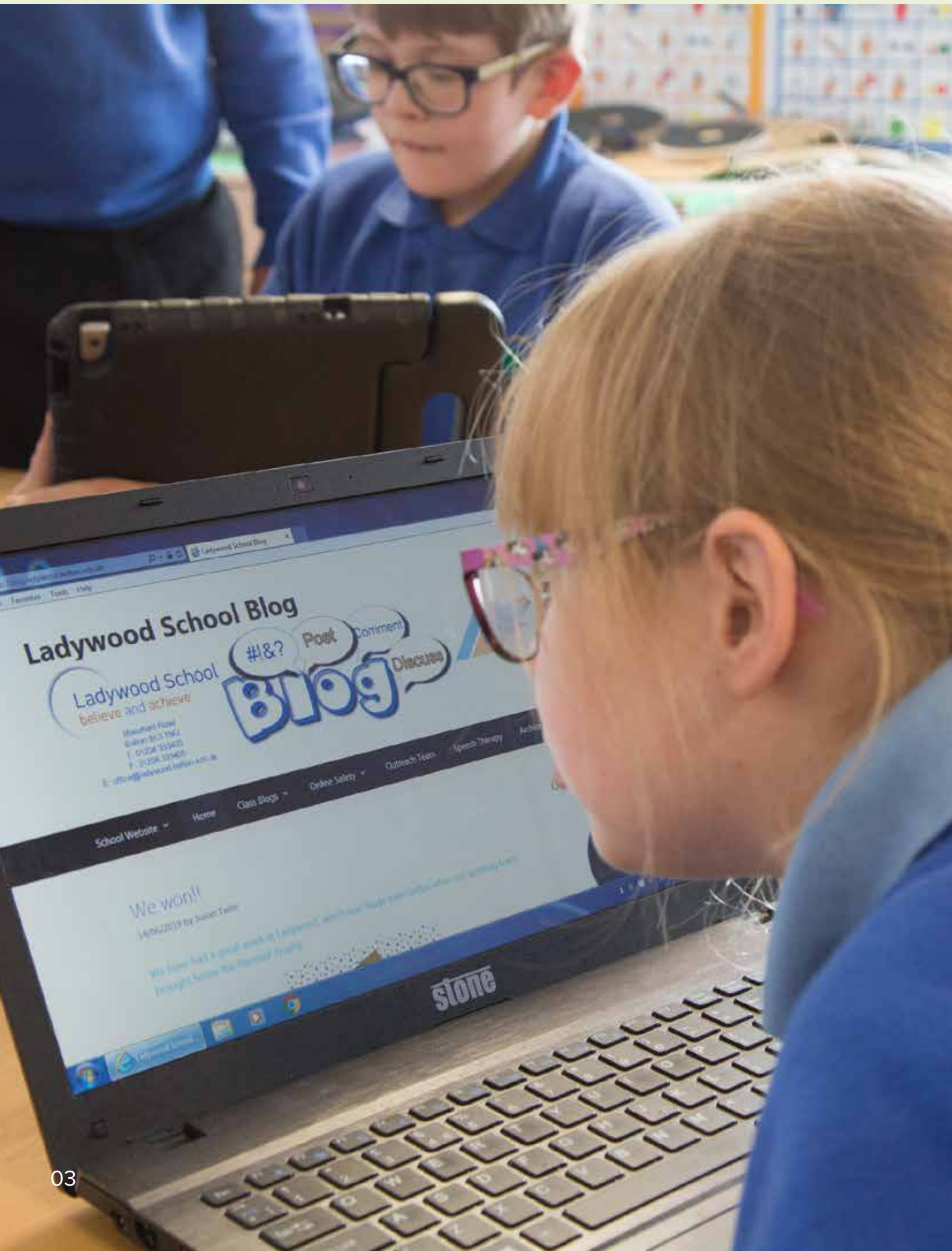




## Contents

- 04** Welcome to Ladywood
- 06** Our Values at Ladywood
- 08** Learning at Ladywood
- 10** Our Engaging Curriculum
- 12** Our Environment
- 14** Our Partnerships with Parents
- 16** Our partnerships with Specialist Services
- 18** Our Healthy Attitudes







# Welcome to Ladywood

We are delighted to welcome you to Ladywood School, as part of the Woodbridge Trust and hope you find the information in this brochure useful and inspiring. We believe that our children are all fantastic individuals who can achieve wonderful things... and they do!

We have the highest aspirations for our children and believe that our role is to support and facilitate our children's learning so that they can truly achieve their potential.

Ladywood School and Outreach Service is recognised to be outstanding. We are designated as a National Teaching School and a National Support School. These roles help us to constantly evaluate and reflect on our practice so we ensure that our children receive the very best learning opportunities. As our mission statement states we really do 'Believe and Achieve' at Ladywood! If you would like to see our School Blog, please visit <https://blog.ladywood.bolton.sch.uk>

**“Ladywood is an asset to the local authority and should be held up as a beacon of success where teaching is excellent and pupils learn and are cared for exceptionally well.”**

Ofsted 2016





# ART GALLERY





# Our Values at Ladywood

At Ladywood we value the uniqueness of every child. We utilise the core strengths of our team and those around us, within the community to fully support the development of every child.

We nurture children to enable them to reach their goals, to have aspirations and embrace learning. We recognise success and are proud that we provide an environment, which is both empowering and rich in trust, well-being and safety.

We do our best for all children, developing confidence, relationships, communication, integrity and respecting each other to always do the right thing. Using new ideas and knowledge, we take positive risks, by being positive and embracing change with a willingness to continually improve.

At Ladywood we fully believe that success is instilled through working as a holistic team and go the extra mile; being role models to others and striving to be the best we can.

**“Ladywood School,  
without a shadow  
of doubt, lives up to  
its motto of ‘Believe  
and Achieve’”**

Ofsted 2016







# Learning at Ladywood

Ladywood School is an educational community, in which all young people are valued. At Ladywood School, our children follow a thematic and connected curriculum, which is delivered through a topic based approach. Our curriculum provides pupils with opportunities to develop and learn essential life skills, including communication, social skills and vocational skills, to support them fully to achieve their full potential as young adults in the community and to support them to have positive futures. Teaching and learning is carried out in small groups or on a one to one basis to ensure that the focus is appropriate for every child. At Ladywood the curriculum is based on the Early Years Foundation Stage curriculum for our younger children and on the National Curriculum for Key Stage 1 and 2 and is fully differentiated to suit the individual needs of every child.

Some of our children require a specialist approach to learning and for those with a diagnosis of Autistic Spectrum Disorder (ASD) we offer a high level of routine and structure. As a Communication Friendly School, supporting children to express ideas, share thoughts and understand what is being said, is at the heart of our teaching and learning. All pupils are fully supported to communicate effectively, using a wide range of tools and in all areas of school life, including augmentative forms of communication such as Picture Exchange Communication System (PECs), signing and symbol support.



**“She has made fantastic progress academically due to the individualised curriculum, wonderful teaching and support from all the brilliant staff”**

Parent





# Our Engaging Curriculum

Creative and Expressive Arts have a high profile at Ladywood. We work with a range of artists, arts organisations and pupils are encouraged to explore a range of art forms, to develop learner's individual interests, talents, and points of learning. The Creative Arts enriches our curriculum and threads through all areas.

In addition to our core offer, children and young people collaborate with a wide range of creative artists, including Bolton Library and Museum Services and The Octagon Theatre. We are part of the Bolton Cultural Learning Partnership exploring and developing the local cultural offer for all children.

We also work alongside Curious Minds the Northern Bridge Organisation for the Arts Council on the Specialist Leaders of Cultural Education programme.

Locally we participate in a wide range of events, including the Bolton Music Festival. Our children have multiple opportunities to perform and develop their talents.

Parent Quote:

**“My child has been given a wealth of opportunity: going on a residential, singing in the choir, drumming at the Reebok and participating in a historical theme about Bolton. Ladywood has helped my child to reach his potential and have high expectations for his future.”**









# Our Environment

Children at Ladywood have the opportunity to learn in a variety of learning environments, including our outdoor sensory garden, outdoor forest area, high-tech sensory room and soft play area. These areas are designed to support children to develop a wide range of skills, including social skills, communication, vocabulary development and physical activity.

Our EYFS, KS1 and KS2 playgrounds have been designed to fully support the development of every child.



“All areas of her development are flourishing because her individual learning plan is tailored to suit her needs and she really loves to learn in this environment”

Parent







# Our Partnerships with Parents

We fully endorse the views of Ofsted, who say, “Highly effective communication between parents and the school contributes enormously to pupils’ personal development, because this is a two-way process in which parents and the school learn from each other”.

We recognise and highly value the huge contribution that parents make to their child’s overall education and development, which is shown by our achievement of the Leading Parent Partnership Award. A key feature of the school environment is our parental aspiration tree, which allows parents and carers to share their future aspirations for their child. This visual symbol ensures that parental aspirations are at the heart of our teaching and learning and at the heart of our children’s journey through Ladywood.

Parents are invited to all whole school events and have regular communication through the use of the daily home/school diary. Many

parents also enjoy being part of the PTA and Parent Group, which gives our parents opportunity to meet other parents and be involved with the social aspects of school life.







# Our partnerships with Specialist Services

At Ladywood we strive to meet the needs of the whole child. In doing so, we greatly value the expertise of a wide range of professionals and work collaboratively to ensure the very best outcomes are achieved.

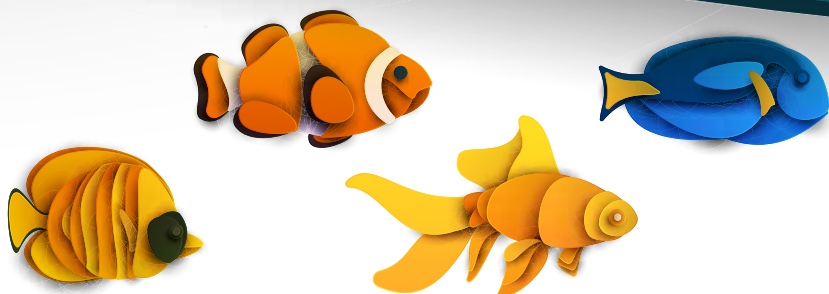
These are:

- **Speech and Language Therapy Service**
- **Integrated Community Paediatric Service**
- **Educational Psychologist**
- **Teachers for Hearing and Visually Impaired**
- **Therapy Teams**



“The keys to the school’s success are the strong relationships between adults and pupils and their parents, along with the staff’s detailed knowledge and understanding of each pupil’s specific needs.”

Ofsted 2016









## Our Healthy Attitudes

We fully embrace the ethos of adopting a positive and healthy mind-set and support our pupils to lead a healthy life style. Whilst this is taught through our curriculum, it is also weaved in to many aspects of our school day. This includes opportunities to engage in daily physical activity and time to access low stimulus and nurturing environments.

At lunchtime children may bring a packed lunch or purchase a school dinner. We believe that a healthy balanced diet facilitates successful learning and therefore encourage our pupils to adopt a healthy approach to eating. Vegetarian or special dietary requirements may be accommodated through liaison with parents and medical professionals. Staff are also experienced in supporting children who experience sensory or feeding issues.



Believe  
and  
Achieve





# Believe and Achieve

Ladywood School and Outreach Service  
Masefield Road, Bolton BL3 1NG

Tel: 01204 333400 | Fax: 01204 333405  
Email: [office@ladywood.bolton.sch.uk](mailto:office@ladywood.bolton.sch.uk)  
[www.ladywood.bolton.sch.uk](http://www.ladywood.bolton.sch.uk)