



LADYWOOD SCHOOL

MARCH 2024 NEWSLETTER

Dear Parents and Carers,

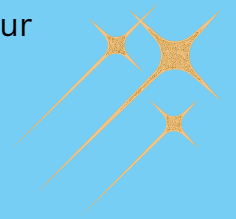
Ladywood continues to have a full and exciting timetable each week; we particularly enjoyed our World Book Day and seeing the children interact with different books as well as some of the amazing costumes both the children and staff wore.



We hope you have managed to engage with one of our parent activities this term. We have held coffee mornings, training sessions and an Easter Bingo to name just a few. We are always looking for different ways to engage with our parents so if you do have any ideas please do let us know!

After Easter, our Year 6 pupils go on their residential to Bendrigg which I know they are all excited about. This is a fantastic opportunity which allows our children to engage with different experiences as well as enjoy time with their friends. Please can I just take this opportunity to thank the Ladywood team who support all our after school events.

Wishing you a fabulous Easter break,
Susan and everyone at Ladywood



Upcoming Events

- ★ Thursday 28th March - School Finishes for Easter Holidays
- ★ Friday 26th April, 1.30 - 2.30 - Parent Coffee & Chat Session
- ★ April - Year 6 children to Bendrigg Residential

Reminder

Please note, school finishes on Thursday 28th March and re-opens on Monday 15th April



Easter Bingo

Thank you to everyone who came or donated to our Easter Bingo. It was a fabulous event raising an amazing £337.68!

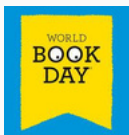


The Big Breakfast



On Wednesday and Thursday this week the staff and children will be treated to a special breakfast prepared by the Senior Leadership Team as a thank you to all our amazing children and staff.

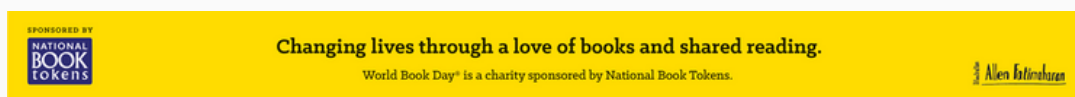
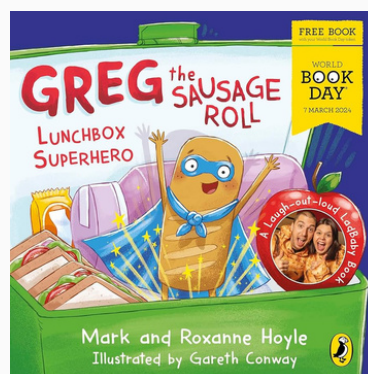
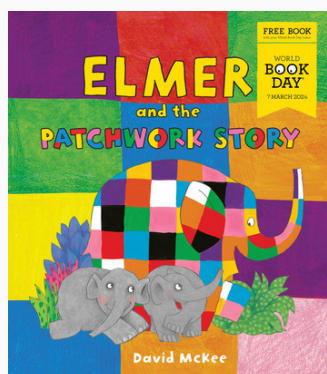




World Book Day

On the 7th March Ladywood celebrated World Book Day. The children and staff were invited to come to school dressed as their favourite book character. They took part in lots of exciting activities linked to the books “Greg the Sausage Roll: Lunchbox Superhero” and “Elmer and the Patchwork Story”. They did PE in the hall - lots of different gymnastic rolls, including the sausage roll! Music in the Light Room and made sausage rolls using playdough.

The children decorated an Elmer collage, used colourful sensory tuff trays and took part in an Elmer themed sensory circuit.



LPPA Accreditation



We are delighted to inform you that Ladywood School are working towards getting reaccredited with the Leading Parent Partner Award (LPPA). We will keep parents informed of any updates



Holi Festival Colour Run

On Monday the children had a great time celebrating Holi Festival by taking part in a fun Colour Run!!



Comic Relief

Thank you to everyone who donated to our Comic Relief Day, we raised over £200.00 which is a fantastic amount.



School Ambassadors

Our School Ambassadors did an amazing job welcoming and escorting visitors to the hall for the Open Morning. They looked very smart in their School Ambassador Sweatshirts!



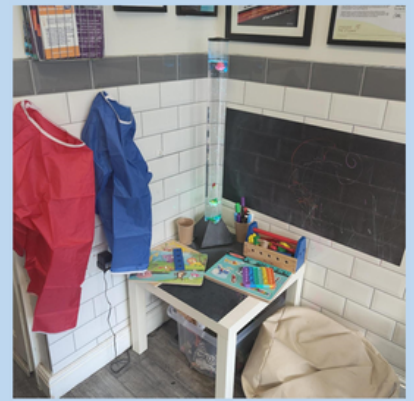


Craig's Barber Shop:

Ladywood recently heard about Craig and the service he offers which we felt some of our families may benefit from.

We hope you will find this useful if you have a child that finds going to the barbers a challenge.

Craig Henderson owns Craig's Barber Shop in Bolton with his partner, which they describe as a gender neutral, neurodiverse establishment.



Whilst also operating as a standard barbers, Craig has also set up his work environment to be as friendly as possible to people, particularly children and young people, with sensory issues such as autism.

Craig says that although he has always tried to be as inclusive as possible, his 13-year-old son Ashton, who is diagnosed with sensory processing disorder, has helped him understand and adapt his practices.

He said: "Everyone is different. Every child or young person has different needs and a different experience.

Craig has also worked in conjunction with design company Doodle Juice to have some PECS cards made up.

PECS, or picture exchange communication system, help people with limited verbal communications or hearing impairments to communicate emotions and gain a better understanding of their environment and situation.

Craig has also built a sensory corner in his shop, so children can entertain themselves with a fish bubble lamp, a tablet or a chalk board.

The experience is very highly rated by Craig's customers, with several people taking to Trustpilot to show their admiration for his services.



Some of the opportunities we have been enjoying to enhance our personal development, within our local community and during Clubs this month.



Table Cricket



Mentor Dogs



Curling Club



Bolton Together

IThrive Offer - 2 – 25 years

Help is available if your child is feeling low, anxious, or struggling with their emotions. Someone to talk through what they are experiencing, information on what can help and one to one support. Bolton Together has brought together 7 charities to support the child and the whole family.

At Bolton Together:

- All support offered is flexible, with sessions taking place at school or a provider setting.
- We use a strength-based approach, using interventions that are best suited to a child's wants, interests and needs.
- The strategies and tools we provide aim to improve the child's emotional health and wellbeing long-term.

Bolton Together's IThrive 2 – 11 Offer

2-5 yrs	Homestart HOST Provide one to one support to families, who have at least one child under five. They have a team of trained local volunteers who are all parents themselves.
	Bolton Toy Library Give guidance to parents to find the right support, drop-in advice sessions, one to one support, themed activity sessions and Emotional Wellbeing Kit
5-8 yrs	Child Action North West Offer a range of therapies and activities for children and their families, to help them with their emotional health.
	Fortalice Support children and families who have experienced domestic abuse, providing guidance and techniques to parents/carers in how they can support their child and offer a range of interventions to children and young people
8-11 yrs	Bolton Wanderers In the Community Provide one to one mentoring for young people with the opportunity for each child to attend activities with their mentor as part of the support offered.
	Action for Children Deliver the Decider skills group, that teaches children and adults the skills to recognise their own thoughts, feelings and behaviours.
	Urban Outreach Offer one to one support for the child and the family, exploring issues and challenges, learning tools to manage emotions and developing coping strategies.

To be allocated to the right service by an Emotional Health and Well Being Practitioner

Click here for our referral form Email: IThrive@boltontgether.org.uk

Website: IThrive@boltontgether.org.uk

To access Bolton Together's mental health and emotional wellbeing offer. If you feel your child or young person requires CAMHS please refer directly to the service <https://www.gmmh.nhs.uk/bolton-camhs/>

Parent Partner

Sarah Travis is the School's Parent Partner and will be able to provide guidance, advice and support for parents/carers.



She will be available Tuesday, Wednesday and Thursday afternoon.

Should you require any help then please contact Sarah either on the school office number:
01204 333400
or via email parentpartner@ladywood.bolton.sch.uk



Snack Money

May we remind parents of non-pupil premium children, of the voluntary contribution of £1.00 a week towards your child's snack. This can be paid in cash or via your School Gateway account. If paying by cash, please send into school in an envelope with your child's name on. Thank you.



Welcome to Natasha Hampson who has recently joined the Ladywood Team.



We said goodbye and good luck to Freya Hemingway, wishing her all the very best for the future.



The Sensory Integration Education

The Occupational Therapy Service have created a free online resource with access to expert help for sensory needs for parents and carers. For more information please click on the link below:

<https://helpnow.sensoryintegrationeducation.com/>



In the UK, an estimated 350,000 tones of clothes end up in landfill every year! Join us and our ECO council in working towards reducing carbon emissions.

We would love any donations of nearly new or good quality Ladywood uniform for our uniform bank

Items can be donated via the school office



Attendance/Leave of Absence

As part of new guidance and monitoring of pupil attendance from the Department of Education, a Leave of Absence form needs to be completed 4 weeks prior to an event, due to authorisation from the Head Teacher.

Parents will need to provide as much information as possible before sending in the form. As a parent, you may wish to take your child, out of school, on holiday in less busier times, to benefit from quieter facilities. Please can you put this level of detail in the Leave of Absence form.

If you are taking your child out of the country for longer than 10 days, school will also require copies of flight tickets, both leaving England and arriving back into England, and an address where your child will be staying.

We realise that sometimes families may need to visit family overseas at short notice. We will still require a Leave of Absence form to be completed, flight tickets and address where the child will be staying.

In addition, we understand that children with Special Educational Needs may need to attend medical appointments more frequently and these will be authorised, however we would still ask that school are informed of these prior to attending.

It is the right of a child to receive an education and school attendance is crucial for children's progress of learning. Attendance is closely monitored at school and if there is an issue Ladywood's Attendance lead may be in touch to offer support or strategies.

If your child is off school for any reason please get in touch with the office to let them know the reasons. It is important we have a full picture of children's attendance throughout the year.

Click on link below for the Holiday Request Form:

<file:///F:/Holiday%20application%20forms%20-%20pupils.pdf>



Friends of Ladywood



What is FOL?

Friends of Ladywood are a group of parents/carers (who wish to have a more involved role in school) and staff, that get together regularly to discuss and plan upcoming fundraising events.

When do we meet?

We meet once every half term.

What if I cannot commit to attend every meeting?

Do not worry if you cannot attend every meeting, we understand that parents and carers will have a busy home life also. We will keep in regular contact with you over email to inform you of any outcomes and future meetings you may be able to attend.

What does it involve?

Being a friend of Ladywood involves a wide range of things. Here are a few:

- Attending meetings to discuss upcoming events (Easter Raffle/Christmas Fair) & bringing new ideas to the table.
- Sourcing raffle prizes from local businesses.
- Helping to put on large events at the school to fundraise for Ladywood.



If you are interested in becoming a member of 'Friends of Ladywood' but cannot attend please email:

friendsofladywood@ladywood.bolton.sch.uk

one of our team members will be in touch.



PARENT EVENTS

Free training events and coffee and chat sessions each half term.

- ✓ Meet other parents
- ✓ Get your questions answered
- ✓ Learn new skills

PARENT COFFEE AND CHAT SESSION
FRI 26TH JAN 1:30-2:30PM

COMPUTING - ONLINE SAFETY AND ACTIVITIES TO SUPPORT LEARNING AT HOME.
FRI 9TH FEB 1:30-2:30PM

PARENT COFFEE AND CHAT SESSION
FRI 8TH MARCH 1:30-2:30PM

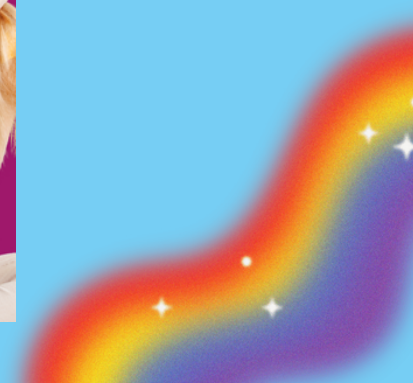
MATHS - ENGAGING ACTIVITIES AND IDEAS TO SUPPORT MATHS AT HOME.
FRI 22ND MARCH 1:30-2:30PM

PARENT COFFEE AND CHAT SESSION
FRI 26TH APRIL 1:30-2:30PM

SCIENCE - ENGAGING AND FUN IDEAS TO SUPPORT SCIENCE AT HOME
FRI 17TH MAY 1:30-2:30PM

PARENT COFFEE AND CHAT SESSION
FRI 14TH JUNE 1:30-2:30PM

HOW TO SUPPORT COMMUNICATION AND BEHAVIOUR AT HOME
FRI 28TH JUNE 1:30-2:30PM





Online Payments

We have now moved to School Gateway with regards to the payment of school meals, snack and a way in which we can communicate with parents.

Please see the guidance below on how to sign up to School Gateway.

It is essential that parents sign up for School Gateway so that you will continue to receive information from school such as school closures due to bad weather etc. We will no longer be using Teachers2Parents as a form of communicating.

If you are struggling to sign up please feel free to come to our Parent Coffee & Chat session on 8th March, 1:30-2:30 at main site and we will be able to assist you in signing up. Alternatively you can telephone the school's office for guidance over the phone.



How to activate your account

1. Download the Android or iPhone app.



2. Press '**Sign Up**' then enter the email and mobile number your school has on record. If you're not sure if they have the right details, it's best to check and update first.
3. Press '**Send PIN**'. You will receive a text message with your unique PIN.
4. You're now ready to log in and start using School Gateway.
5. If you don't have a smartphone or prefer to use a computer, you can set up your account using [the web version](#) of School Gateway.
6. See a video guide [here](#)

How to log in

1. Once you have your PIN, go ahead and launch the School Gateway app on your smartphone or tablet.
2. Enter the email you have registered with your school and the PIN you received. If you didn't get a PIN, it is likely because your school doesn't have the right contact info. Get in touch with them to check.
3. If both the email and PIN are entered correctly, hit '**Log in**' and you're ready to start enquiring with your school.
4. You can also access School Gateway [on the web](#)

Early Help Parenting Drop-in

For all families with children under 18

We know that being a parent is not always easy and that families need extra support at some stage as children grow up.

Targeted Early Help Workers will be on hand to offer advice and support.

We can offer signposting to helpful services, organisations and community groups.

Poor school attendance?

Are they being excluded from school?

Are they anxious or struggling with self-esteem?

Are you struggling with your child's behaviour?

Not sure what services there are available that can help to support you?



Come and join us for a cup of tea and a chat if you want any advice or information about parenting.

Drop-in sessions, 9.30am - 3.30pm

Farnworth King St Centre 20 Jan | 10 Feb | 2 Mar | 23 Mar | 20 Apr

Oxford Grove Children Centre 6 Jan | 27 Jan | 17 Feb | 9 Mar | 6 Apr | 27 Apr

Tonge Children Centre 13 Jan | 3 Feb | 24 Feb | 16 Mar | 13 Apr



For more information please contact:
Targeted Early Help Tel: 01204 337390
Email: earlyhelp@bolton.gov.uk



Early Help Parenting Drop-in

For all families with children under 18

We know that being a parent is not always easy and that families need extra support at some stage as children grow up.

Targeted Early Help Workers will be on hand to offer advice and support.

We can offer signposting to helpful services, organisations and community groups.

Poor school attendance?

Are they being excluded from school?

Are they anxious or struggling with self-esteem?

Are you struggling with your child's behaviour?

Not sure what services there are available that can help to support you?



Come and join us for a cup of tea and a chat if you want any advice or information about parenting.

Drop-in sessions, 9.30am - 3.30pm

Farnworth King St Centre 20 Jan | 10 Feb | 2 Mar | 23 Mar | 20 Apr

Oxford Grove Children Centre 6 Jan | 27 Jan | 17 Feb | 9 Mar | 6 Apr | 27 Apr

Tonge Children Centre 13 Jan | 3 Feb | 24 Feb | 16 Mar | 13 Apr



For more information please contact:
Targeted Early Help Tel: 01204 337390
Email: earlyhelp@bolton.gov.uk



Ladywood Social Media

To keep up to date with all our latest news, please follow us on our various social media platforms.



Instagram: @ladywoodschoo



Twitter: @ladywoodschoo



Facebook: Ladywood School



Youtube: Ladywood School

Ladywood Blog

Please don't forget to check the blog for daily/weekly updates on the children's learning and all the exciting activities that have been happening around school. The blog is a great way for everyone to communicate and to keep up to date.

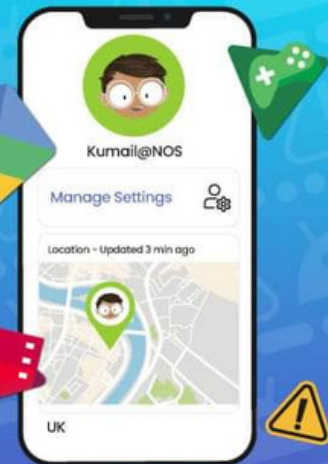
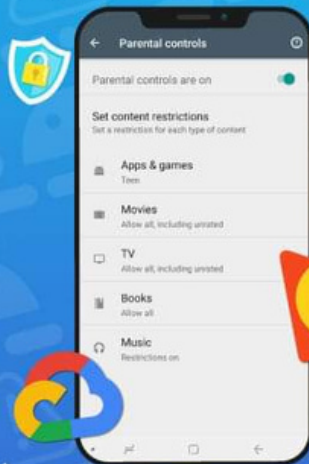
<http://blog.ladywood.bolton.sch.uk/>

Internet Safety

At National Online Safety, we believe in empowering parents, carers and trusted adults with the information to hold an informed conversation about online safety with their children, should they feel it is needed. This guide focuses on one issue of many which we believe trusted adults should be aware of. Please visit www.nationalonlinesafety.com for further guides, hints and tips for adults.

How to Set up PARENTAL CONTROLS for APPS Android Phone

On Android phones, restricting access to particular apps usually requires going onto Google Play. From there, it's fairly easy to navigate your way through the settings to manage the parental controls and authentications relating to any apps on the device. These features can prevent your child from downloading or buying anything unsuitable for their age. Updated versions of apps or games that your child has already installed may occasionally contain something inappropriate, so we've explained how to stop those, too.



How to Block App Downloads (This Also Disables In-app Purchases):

- 1 Open Google Play Store
- 2 Tap the profile icon in the top right
- 3 Tap Settings
- 4 Scroll down to the Family section and tap Parental controls
- 5 Toggle 'Parental controls are off' to 'Parental controls are on'
- 6 Create a PIN and tap OK
- 7 Confirm your PIN and tap OK again
- 8 Tap Apps & Games
- 9 Set the age limit you wish to set
- 10 Tap Save to apply your changes

How to Stop Auto-updates

- 1 Open Google Play Store
- 2 Tap the profile icon in the top right
- 3 Tap Settings
- 4 Tap Auto-Update Apps
- 5 Select 'Don't auto-update apps' and then tap Done

Restricting Apps Through Google Family Link

- 1 Open Google Play Family Link for parents
- 2 Tap the three horizontal lines in the top left
- 3 Select your child's account
- 4 Tap Manage
- 5 Tap Controls on Google Play
- 6 Tap Apps & Games
- 7 Select the age limit you wish to set



NOS
National
Online
Safety®
www.nationalonlinesafety.com

Sickness

Please be aware that if your child has an episode of sickness and/or diarrhoea they need to be kept off school for 48 hours from the last bout of sickness.

All schools are expected to adhere to this guidance from The Community Infection Prevention and Control Team.

Many thanks in anticipation of your support

Parking

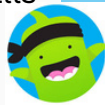
Could we please request that parents who drop/collect their child by car, ensure when parking that you do not block other cars in, and also that you do not park in a Masefield School parking place.

Thank you for your co-operation.

Communication with Home

We are continuing to use Class Dojo as the main form of communication with parents/carers.

However, we appreciate that there may be times that you feel you need to speak to someone in person or urgently and the office team are always available and welcome calls from parents/carers.



Appointments

If your child has an upcoming appointment, could we please ask that you notify school in advance of when the appointment is taking place. Could a copy of the appointment letter also be sent to school prior to the appointment.

Thank you for your co-operation.

Contact Information

Please ensure that contact details and medical information for your child are up-to-date. If you are unsure please contact the main office on 01204 333400.

Could we please ask that parents keep their phone switched on throughout the day so that we are able to make contact with you if needed. Thank you.



Good Attendance Matters

At Ladywood we provide a safe learning environment which encourages all pupils to attend and be punctual whatever their level of ability or specific needs. We pride ourselves on high standards of pupil attendance and we expect that all children will attend school as long as they are fit and well enough to do so in line with the expectations of 380 half days (190 full days) for an academic year.

A child's attendance at school is the responsibility of parents/carers. Ladywood School will continue to actively work with parents/carers to encourage a regular pattern of attendance is maintained to ensure our children:

- Benefit from the educational opportunities provided at Ladywood
- Experience a broad and balanced creative curriculum
- Build on their learning experiences to achieve their full potential
- Develop their social and personal skills
- Promote children's welfare and safeguarding, failing to attend school on a regular basis will be considered as a safeguarding matter
- Have their legal entitlement to education; ensuring regular attendance at school is a legal responsibility and permitting
- Absence from school without a good reason creates an offence in law

The Government have brought out new guidelines that requires schools to ensure all children attend well. This includes:

- Attendance meetings if attendance falls below acceptable levels
- Daily contact when your child is absent
- A requirement to show proof of medical appointment
- Door stop visits

TERM TIME HOLIDAYS

As a school we understand that our children sometimes need to go on holiday when it is quieter rather than during the main holidays when it is very busy. We ask that you put in a holiday request form and seek permission in order for this to be authorised.

LADYWOOD HOLIDAY LIST 2023-2024 - PUPILS

September 2023							
Wk	Mo	Tu	We	Th	Fr	Sa	Su
35					1	2	3
36	4	5	6	7	8	9	10
37	11	12	13	14	15	16	17
38	18	19	20	21	22	23	24
39	25	26	27	28	29	30	

October 2023							
Wk	Mo	Tu	We	Th	Fr	Sa	Su
39							1
40	2	3	4	5	6	7	8
41	9	10	11	12	13	14	15
42	16	17	18	19	20	21	22
43	23	24	25	26	27	28	29
44	30	31					

November 2023							
Wk	Mo	Tu	We	Th	Fr	Sa	Su
44			1	2	3	4	5
45	6	7	8	9	10	11	12
46	13	14	15	16	17	18	19
47	20	21	22	23	24	25	26
48	27	28	29	30			

December 2023							
Wk	Mo	Tu	We	Th	Fr	Sa	Su
48					1	2	3
49	4	5	6	7	8	9	10
50	11	12	13	14	15	16	17
51	18	19	20	21	22	23	24
52	25	26	27	28	29	30	31

January 2024							
Wk	Mo	Tu	We	Th	Fr	Sa	Su
1	1	2	3	4	5	6	7
2	8	9	10	11	12	13	14
3	15	16	17	18	19	20	21
4	22	23	24	25	26	27	28
5	29	30	31				

February 2024							
Wk	Mo	Tu	We	Th	Fr	Sa	Su
5				1	2	3	4
6	5	6	7	8	9	10	11
7	12	13	14	15	16	17	18
8	19	20	21	22	23	24	25
9	26	27	28	29			

March 2024							
Wk	Mo	Tu	We	Th	Fr	Sa	Su
9					1	2	3
10	4	5	6	7	8	9	10
11	11	12	13	14	15	16	17
12	18	19	20	21	22	23	24
13	25	26	27	28	29	30	31

April 2024							
Wk	Mo	Tu	We	Th	Fr	Sa	Su
14	1	2	3	4	5	6	7
15	8	9	10	11	12	13	14
16	15	16	17	18	19	20	21
17	22	23	24	25	26	27	28
18	29	30					

May 2024							
Wk	Mo	Tu	We	Th	Fr	Sa	Su
18			1	2	3	4	5
19	6	7	8	9	10	11	12
20	13	14	15	16	17	18	19
21	20	21	22	23	24	25	26
22	27	28	29	30	31		

June 2024							
Wk	Mo	Tu	We	Th	Fr	Sa	Su
22						1	2
23	3	4	5	6	7	8	9
24	10	11	12	13	14	15	16
25	17	18	19	20	21	22	23
26	24	25	26	27	28	29	30

July 2024							
Wk	Mo	Tu	We	Th	Fr	Sa	Su
27	1	2	3	4	5	6	7
28	8	9	10	11	12	13	14
29	15	16	17	18	19	20	21
30	22	23	24	25	26	27	28
31	29	30	31				

August 2024							
Wk	Mo	Tu	We	Th	Fr	Sa	Su
31				1	2	3	4
32	5	6	7	8	9	10	11
33	12	13	14	15	16	17	18
34	19	20	21	22	23	24	25
35	26	27	28	29	30	31	

SCHOOL IS CLOSED TO PUPILS ON ALL SHADED DAYS

Woodbridge Trust Holiday List 2024-2025 – Parents

September 2024						
Su	Mo	Tu	We	Th	Fr	Sa
1	2	3	4	5	6	7
8	9	10	11	12	13	14
15	16	17	18	19	20	21
22	23	24	25	26	27	28
29	30					

October 2024						
Su	Mo	Tu	We	Th	Fr	Sa
		1	2	3	4	5
6	7	8	9	10	11	12
13	14	15	16	17	18	19
20	21	22	23	24	25	26
27	28	29	30	31		

November 2024						
Su	Mo	Tu	We	Th	Fr	Sa
					1	2
3	4	5	6	7	8	9
10	11	12	13	14	15	16
17	18	19	20	21	22	23
24	25	26	27	28	29	30

December 2024						
Su	Mo	Tu	We	Th	Fr	Sa
1	2	3	4	5	6	7
8	9	10	11	12	13	14
15	16	17	18	19	20	21
22	23	24	25	26	27	28
29	30	31				

January 2025						
Su	Mo	Tu	We	Th	Fr	Sa
			1	2	3	4
5	6	7	8	9	10	11
12	13	14	15	16	17	18
19	20	21	22	23	24	25
26	27	28	29	30	31	

February 2025						
Su	Mo	Tu	We	Th	Fr	Sa
						1
2	3	4	5	6	7	8
9	10	11	12	13	14	15
16	17	18	19	20	21	22
23	24	25	26	27	28	

March 2025						
Su	Mo	Tu	We	Th	Fr	Sa
						1
2	3	4	5	6	7	8
9	10	11	12	13	14	15
16	17	18	19	20	21	22
23	24	25	26	27	28	29
30	31					

April 2025						
Su	Mo	Tu	We	Th	Fr	Sa
		1	2	3	4	5
6	7	8	9	10	11	12
13	14	15	16	17	18	19
20	21	22	23	24	25	26
27	28	29	30			

May 2025						
Su	Mo	Tu	We	Th	Fr	Sa
				1	2	3
4	5	6	7	8	9	10
11	12	13	14	15	16	17
18	19	20	21	22	23	24
25	26	27	28	29	30	31

June 2025						
Su	Mo	Tu	We	Th	Fr	Sa
1	2	3	4	5	6	7
8	9	10	11	12	13	14
15	16	17	18	19	20	21
22	23	24	25	26	27	28
29	30					

July 2025						
Su	Mo	Tu	We	Th	Fr	Sa
		1	2	3	4	5
6	7	8	9	10	11	12
13	14	15	16	17	18	19
20	21	22	23	24	25	26
27	28	29	30	31		

August 2025						
Su	Mo	Tu	We	Th	Fr	Sa
					1	2
3	4	5	6	7	8	9
10	11	12	13	14	15	16
17	18	19	20	21	22	23
24	25	26	27	28	29	30
31						

The dates that are shaded in Gold are the days children and young people are not in school.

The dates that are Red are Bank Holidays.